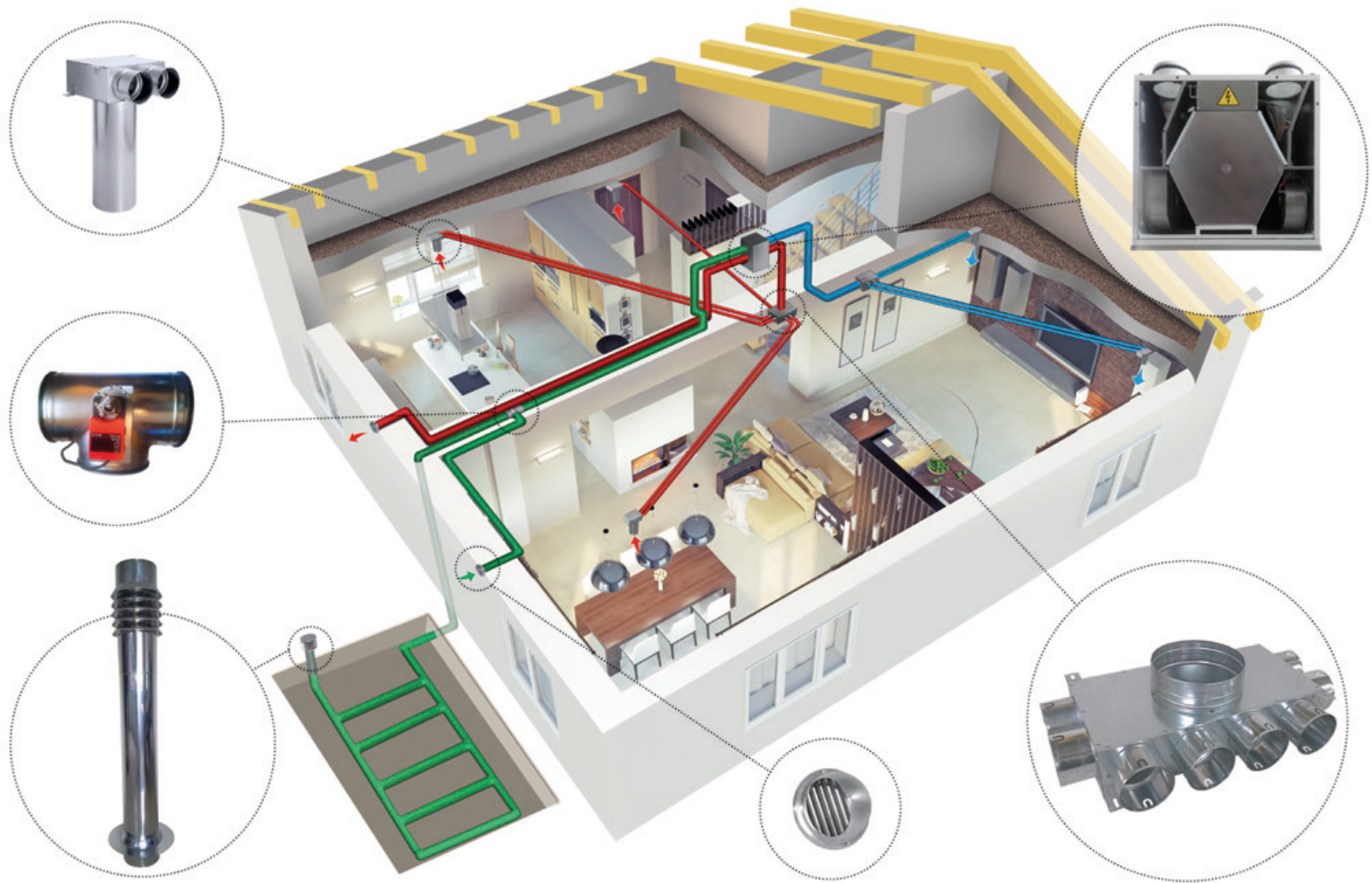


PRODMAX



HEAT RECOVERY SYSTEMS



Recuperation System

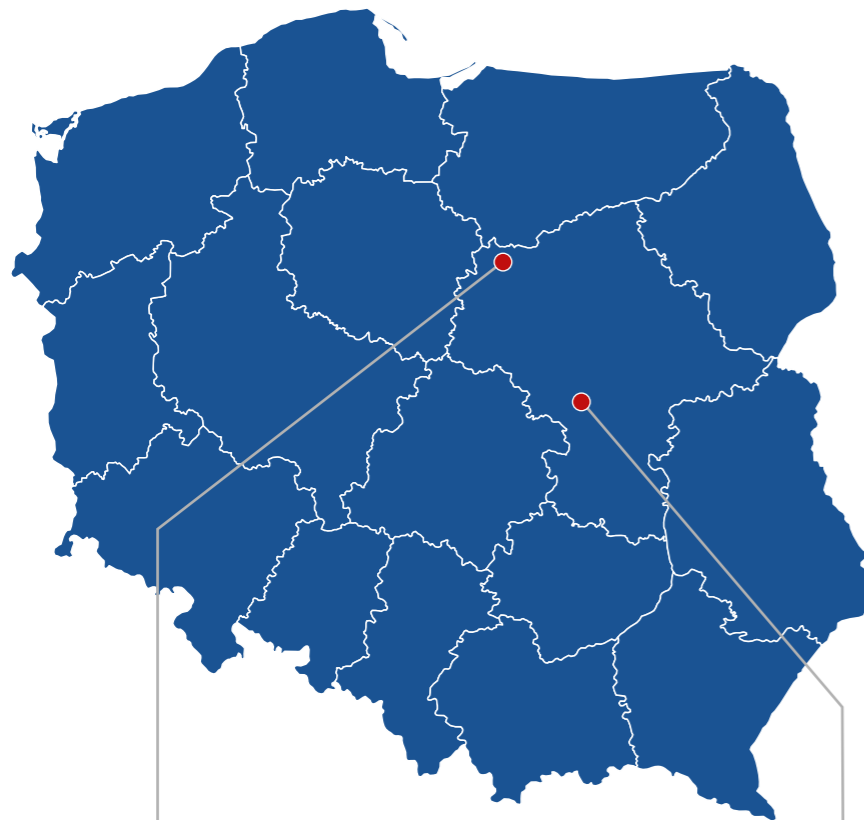
Recuperation System

This is a modern mechanical ventilation system that involves the recovery of heat energy by means of a heat exchanger. This process takes place in a special air handling unit (recuperator) equipped with such an exchanger. The principle of operation of the ventilation system with heat recovery is the delivery and heating of fresh air into a residential building with used air, removed from the building through the heat exchanger.

Method of operation

Recuperation systems are used to reduce energy consumption and daily temperature sta-

bilization inside the building. In addition to heat recovery, recuperation offers many other advantages: the supply of fresh air, reduction of air humidity inside the building, no condensation on windows, no allergens, no insects (flies, mosquitoes), elimination of fungus and mould. Unlike gravity ventilation, mechanical and continuous air exchange is independent of ambient conditions. Mechanical ventilation can be further enhanced using a ground heat exchanger (GHE), in which the air preheats during winter and cools in the summer before entering the house.



CONTACT:

**SALES DEPARTMENT
- SOKOŁÓW**
Phone: 606 250 762
e-mail: prodmax@prodmax.pl

**SALES DEPARTMENT
- ŻUROMIN**
Phone: 604 441 233
e-mail: zuromin@prodmax.pl

TECHNICAL DEPARTMENT
Phone: 668 836 960
e-mail: pbugowski@prodmax.pl

ACCOUNTING DEPARTMENT
Phone: 664 485 496
e-mail: ksiegowosc@prodmax.pl

MARKETING DEPARTMENT
Phone: 505 777 398
e-mail: marketing@prodmax.pl

IMPORT / PURCHASES
Phone: +48 664 485 428
e-mail: zakupy@prodmax.pl

EXPORT SALES
Phone: +48 516 452 904
e-mail: d.grzywna@prodmax.pl

MANUFACTURING PLANT



09-300 Żuromin
ul. Wyzwolenia 130
Poland
Phone / fax: +48 23 659 39 57
mob.: +48 604 441 233
e-mail: zuromin@prodmax.pl

COMPANY'S REGISTERED OFFICE:



05-806 Sokołów
ul. Sokołowska 38
Poland
Phone / fax: +48 22 723 01 62
mob.: +48 606 250 762
e-mail: prodmax@prodmax.pl

VENT-FLEX SYSTEM

VENT-FLEX System	p. 4
VENT-FLEX - Technical Parameters	p. 5
Installation Instructions	p. 6
Plenum Boxes	p. 8
Straight Plenum Boxes	p. 10
Flat Distribution Boxes	p. 12
One and Two Row Distribution Boxes	p. 14
Connection Fittings	p. 17

ROUND DUCT SYSTEM

Ducts, Fittings	p. 18
Reducers, Dampers	p. 19

VENT-FLEX Plus FLAT CHANNEL SYSTEM

VENT-FLEX Plus System	p. 20
Channels, Fittings	p. 22
Distribution boxes	p. 24

AIR INTAKES, EXHAUST VENTS

Wall-Mounted Air Intakes, Exhaust Vents	p. 25
Ground Air Intake of the GHE System	p. 25

INSULATION MATERIALS

VENT-FLEX Duct Insulation Components	p. 26
Rock Wool	p. 26

INSULATED FLEXIBLE DUCTS

MOizo Flexible Ducts	p. 27
Insulated ducts with antibacterial coating	p. 27

DIFFUSERS

Supply / exhaust diffusers	p. 28
Chrome-Nickel Coated Diffusers	p. 28

MOUNTING MATERIALS

Mounting Materials	p. 29
--------------------------	-------

AIR HANDLING UNITS

.....	p. 30
-------	-------

CONTROL PANELS

.....	p. 34
-------	-------

OPTIONAL EQUIPMENT

.....	p. 35
-------	-------

GHE – GROUND HEAT EXCHANGE

.....	p. 36
-------	-------

COMMERCIAL TERMS AND CONDITIONS

.....	p. 38
-------	-------

CONTACT

.....	p. 39
-------	-------

VENT-FLEX

Technical parameters

VENT-FLEX System is the latest ventilation solution for houses, apartments and small-volume buildings. VENT-FLEX System consists of flexible ducts, plenum boxes, distribution boxes, by means of which you can quickly and efficiently perform the mechanical ventilation system in compliance with all European Union construction regulations.

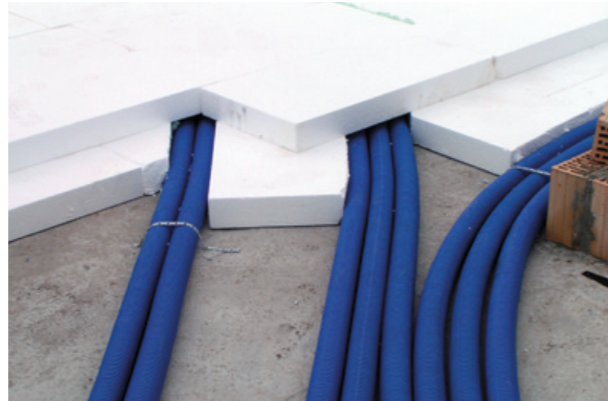
One of the main advantages of VENT-FLEX is the flexibility of the system, small dimensions that allow installation in ceilings, walls and ceilings.

VENT-FLEX:

- **Flexible** during installation
- **Available dimensions include:** 63, 75 and 90 mm
- **Easy installation** – without the need for special tools
- Completely **tight and durable**
- **Quiet and efficient**
- **High hygiene level of the installation** – thanks to the antistatic and antibacterial coating of the VENT-FLEX duct, it prevents the formation of fungus and mould, which has a significant effect on the quality of air supplied to the building
- **No corrosion** – Unlike in case of conventional installations made of steel Spiro ducts, the VENT-FLEX system eliminates the need to cut the ducts, for instance, by the use of an angle grinder during the installation, which causes the damage of the protective zinc coating layer and subsequently the corrosion in these places.
- **Quick and easy cleaning** of the entire installation – easy and efficient cleaning of the

installation without limitations characteristic of conventional systems, such as, protruding mounting screws or tees, which often make it impossible to clean the installation or restrict the access.

- **Minimum pressure losses** – minimum number of fittings (tees, elbows), which generate point flow resistance significantly affecting the performance and energy-saving features of the ventilation system.
- Unlike the conventional system, easy installation of VENT-FLEX and minimum number of mounting components **make it possible to perform installation within 2-3 working days** in a typical single detached dwelling.



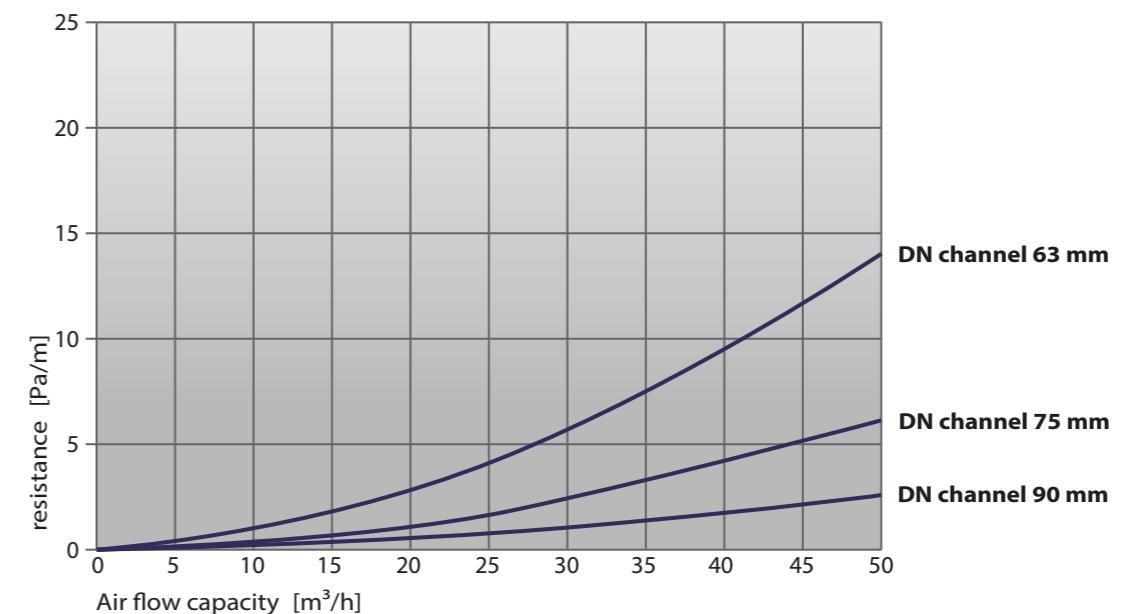
Vent-Flex

TECHNICAL INFORMATION:

Index	Diameter	D-Outside [mm]	D-Inside [mm]	€ Net Price [linear m]
SK01/Ø	DN 63	64	54	3.1
SK01/Ø	DN 75	76	64	3.4
SK01/Ø	DN 90	91	78	4.3

CAPACITY

Capacity in m ³ /h at:	DN 63			DN 75			DN 90		
	2 m/s	2.5 m/s	3 m/s	2 m/s	2.5 m/s	3 m/s	2 m/s	2.5 m/s	3 m/s
1 duct	15 m ³ /h	20 m ³ /h	25 m ³ /h	22 m ³ /h	28 m ³ /h	34 m ³ /h	34 m ³ /h	42 m ³ /h	51 m ³ /h
2 ducts	30 m ³ /h	40 m ³ /h	50 m ³ /h	44 m ³ /h	56 m ³ /h	68 m ³ /h	–	–	–
3 ducts	45 m ³ /h	60 m ³ /h	75 m ³ /h	66 m ³ /h	84 m ³ /h	102 m ³ /h	–	–	–



Installation Instructions

When designing and performing the installation, use the manufacturer's recommendations below and select the specific air consumption according to the Polish Standard guidelines below and the information provided in the VENT-FLEX technical data sheet.

Recommendations for installation of the VENT-FLEX system:

- The length of a single VENT-FLEX duct line **should not exceed 11 lm**; longer lengths, up to 15 lm, are allowed provided that the duct runs as straight as possible from the distribution box to the plenum box while minimizing sharp bends of the duct.
- The ceiling-mounted plenum boxes of diffusers should be mounted at **min. distance of 30 cm** from the walls, respectively in rooms in the farthest corner or above the window; you should avoid the installation above, for instance, a sleeping bed.
- Insulate supply and exhaust ducts that run through insulated, not heated **rooms**, using a wool layer **with min. thickness of 20 mm** or with an insulation material specifically intended for the purpose.
- Insulate supply and exhaust ducts that run through not insulated, not heated **rooms**, using a wool layer **with min. thickness of 100 mm** or with an insulation material specifically intended for the purpose.
- The air intakes and exhaust vents **must be** insulated in each case
- The supply ducts **should be insulated** in case of a system equipped with the cooling and/or heating device, such as the Ground Heat Exchanger, heater/cooler etc.
- Max. temperature of the air flowing in the VENT-FLEX ducts should not exceed **80°C**.

Minimum quantities of air per person are defined in PN-83/B-03430 standard and in the amendment to this standard PN-83/B-03430/Az3:2000.

The most important provisions of the aforementioned standards:

- The volume of ventilation air stream in a residential building is determined by the sum of the streams of the "so called polluted air" removed from the following auxiliary rooms (the values provided below are the required minimum):
 - For a kitchen with an external window, equipped with a gas or coal cooker: **70 m³/h**
 - For a kitchen with an external window, equipped with an electric cooker: **30 m³/h** in an apartment for up to 3 persons, and 50 m³/h for more than 3 persons.

- For a kitchen without an external window equipped with an electric cooker: **50m³/h**
- For a kitchen without an external window equipped with a gas cooker: a mechanical exhaust ventilation system is mandatory: **70 m³/h**
- For a bathroom (with or without a toilet): **50 m³/h**
- For a separate toilet: **30 m³/h**
- For the laundry room – min. double air volume exchanged during one hour.
- For an auxiliary room without a window (pantry, vestibule, wardrobe): **15 m³/h**
- For a living room separated from the kitchen, bathroom and toilet rooms in a single-family house or two-story apartment in a multi-family house: **30 m³/h / person**.

It is also advisable to design ventilation units (air handling units) that allow for a periodic increase in the air stream volume to at least **120 m³/h**.

When using the Ground Heat Exchanger it is recommended that at least single air volume should be exchanged during one hour.

An example of correct selection of air streams

Room number	Room designation	Room surface area [m ²]	Room cubature [m ³]	Air supply [m ³ /h]	Exhaust [m ³ /h]	Rate
1	Living room	25	69	100	-	1.5
2	Surgery	10	28	40	-	1.5
3	Kitchen	14	41	-	80	2.1
4	Pantry	3	8	-	15	1.8
5	TOILET	3	8	-	30	3.6
6	Wardrobe	4	11	-	15	1.4
Total		59	165	140	140	

Plenum Boxes

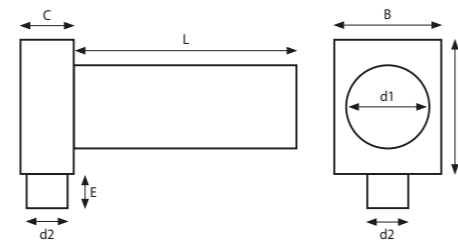
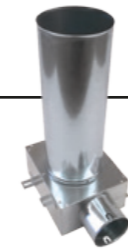
Single-Port Plenum Box (rectangular)

DESCRIPTION: Ceiling- and wall-mounted single-port outlet plenum box to be installed both at the supply and the exhaust sides. A special guide necessary to reduce air flow resistance is mounted inside the box.

MATERIAL: galvanised / stainless steel*

SIZE:

Index	A [mm]	B [mm]	C [mm]	d1 [mm]	d2 [mm]	E [mm]	L [mm]	€ Net Price
SK 1x63/125	200	160	81	125	63	53	330	22.9
SK 1x75/125	200	160	91	125	75	53	330	22.9
SK 1x90/125	200	160	105	125	90	53	330	22.9



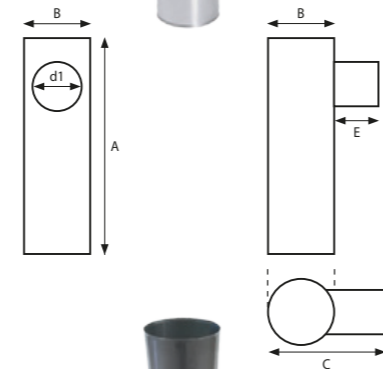
Single-Port Plenum Box (round)

DESCRIPTION: Ceiling- and wall-mounted single-port outlet plenum box to be installed both at the supply and the exhaust sides.

MATERIAL: galvanised / stainless steel*

SIZE:

Index	A [mm]	B [mm]	C [mm]	d1 [mm]	E [mm]	€ Net Price
SK 1x75/100OK	320	100	175	75	68	22.9
SK 1x90/125OK	320	125	175	90	68	22.9



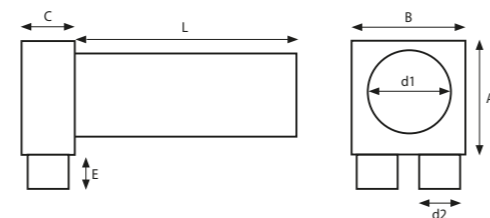
Two Port Plenum Box

DESCRIPTION: Ceiling- and wall-mounted two port outlet plenum box to be installed both at the supply and the exhaust sides. A special guide necessary to reduce air flow resistance is mounted inside the box.

MATERIAL: galvanised / stainless steel*

SIZE:

Index	A [mm]	B [mm]	C [mm]	d1 [mm]	d2 [mm]	E [mm]	L [mm]	€ Net Price
SK 2x63/125	170	170	81	125	63	53	330	25.7
SK 2x75/125	180	200	91	125	75	53	330	25.7



Prices in EUR excluding VAT

* We also produce boxes according to individual customer's design

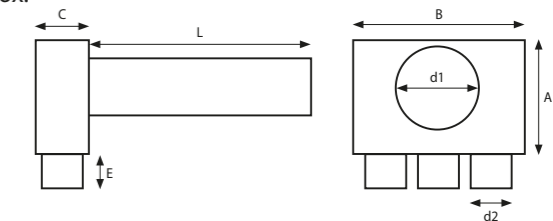
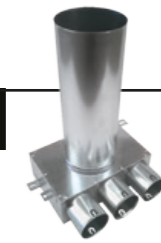
Three Port Plenum Box

DESCRIPTION: Ceiling- and wall-mounted three port outlet plenum box to be installed both at the supply and the exhaust sides. A special guide necessary to reduce air flow resistance is mounted inside the box.

MATERIAL: galvanised / stainless steel*

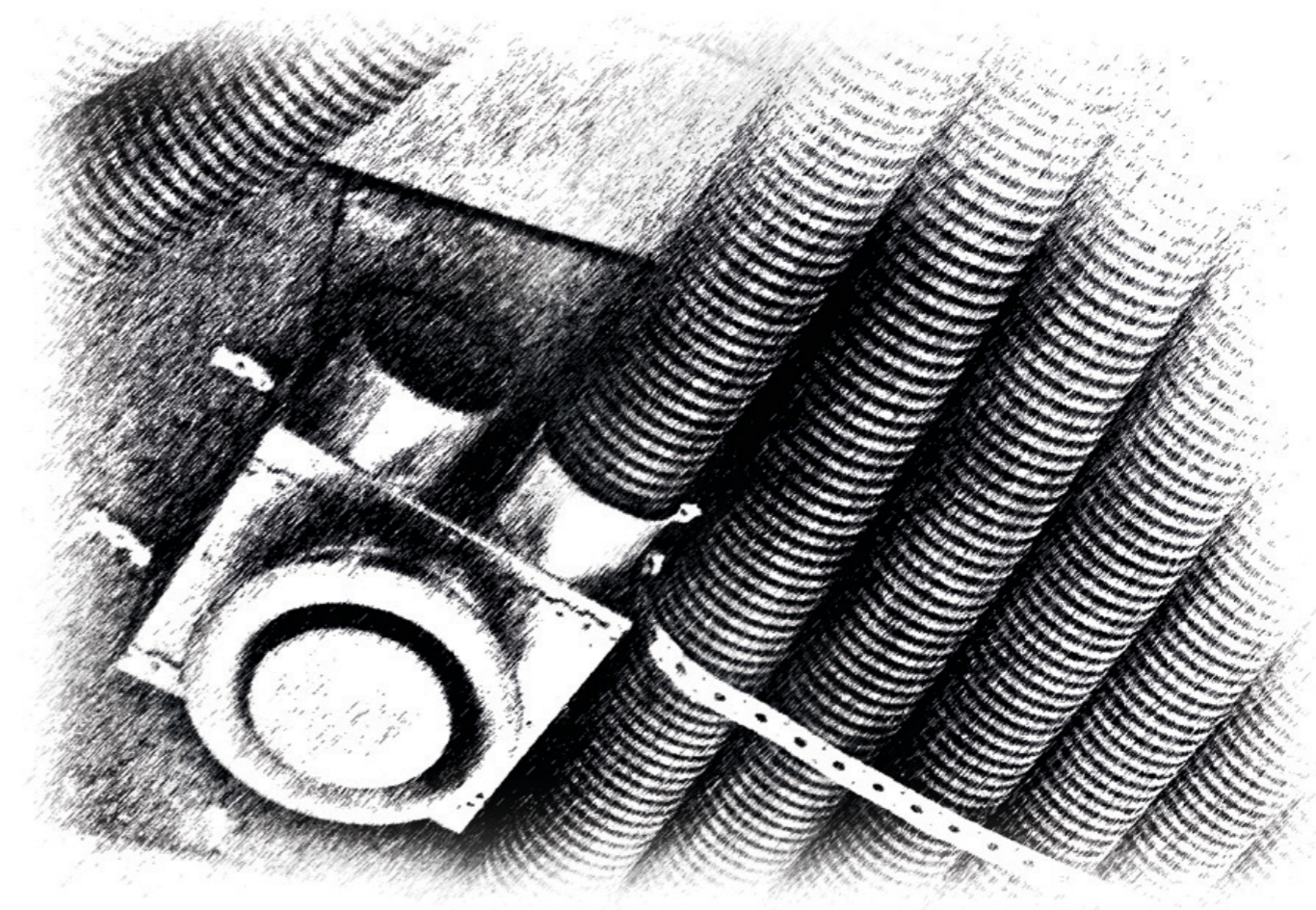
SIZE:

Index	A [mm]	B [mm]	C [mm]	d1 [mm]	d2 [mm]	E [mm]	L [mm]	€ Net Price
SK 3x63/125	170	255	81	125	63	53	330	35.7
SK 3x75/125	220	300	91	125	75	53	330	35.7



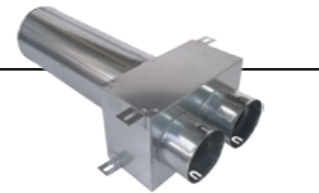
Prices in EUR excluding VAT

* We also produce boxes according to individual customer's design



Straight Plenum Boxes

Two Port Straight Plenum Box

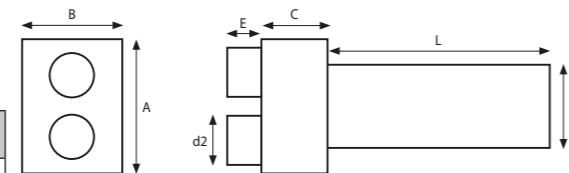


DESCRIPTION: Ceiling- and wall-mounted two port outlet plenum box to be installed both at the supply and the exhaust sides.

MATERIAL: galvanised / stainless steel*

SIZE:

Index	A [mm]	B [mm]	C [mm]	d1 [mm]	d2 [mm]	E [mm]	L [mm]	€ Net Price
SK 2x75/125P	200	150	100	125	75	53	330	28.0



Single Port Straight Plenum Box

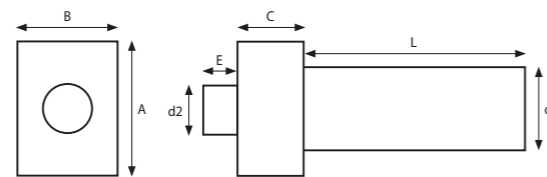


DESCRIPTION: Ceiling- and wall-mounted single port outlet plenum box to be installed both at the supply and the exhaust sides.

MATERIAL: galvanised / stainless steel*

SIZE:

Index	A [mm]	B [mm]	C [mm]	d1 [mm]	d2 [mm]	E [mm]	L [mm]	€ Net Price
SK 1x90/125P	200	150	100	125	75	53	330	28.0



Three Port Straight Plenum Box

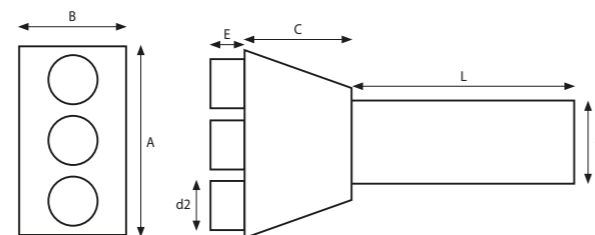


DESCRIPTION: Ceiling- and wall-mounted three port outlet plenum box to be installed both at the supply and the exhaust sides.

MATERIAL: galvanised / stainless steel*

SIZE:

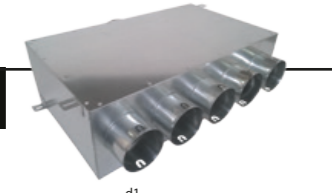
Index	A [mm]	B [mm]	C [mm]	d1 [mm]	d2 [mm]	E [mm]	L [mm]	€ Net Price
SK 3x75/125P	280	160	160	125	75	53	330	35.4



Prices in EUR excluding VAT

*We also produce boxes according to individual customer's design

Five Port Straight Plenum Box



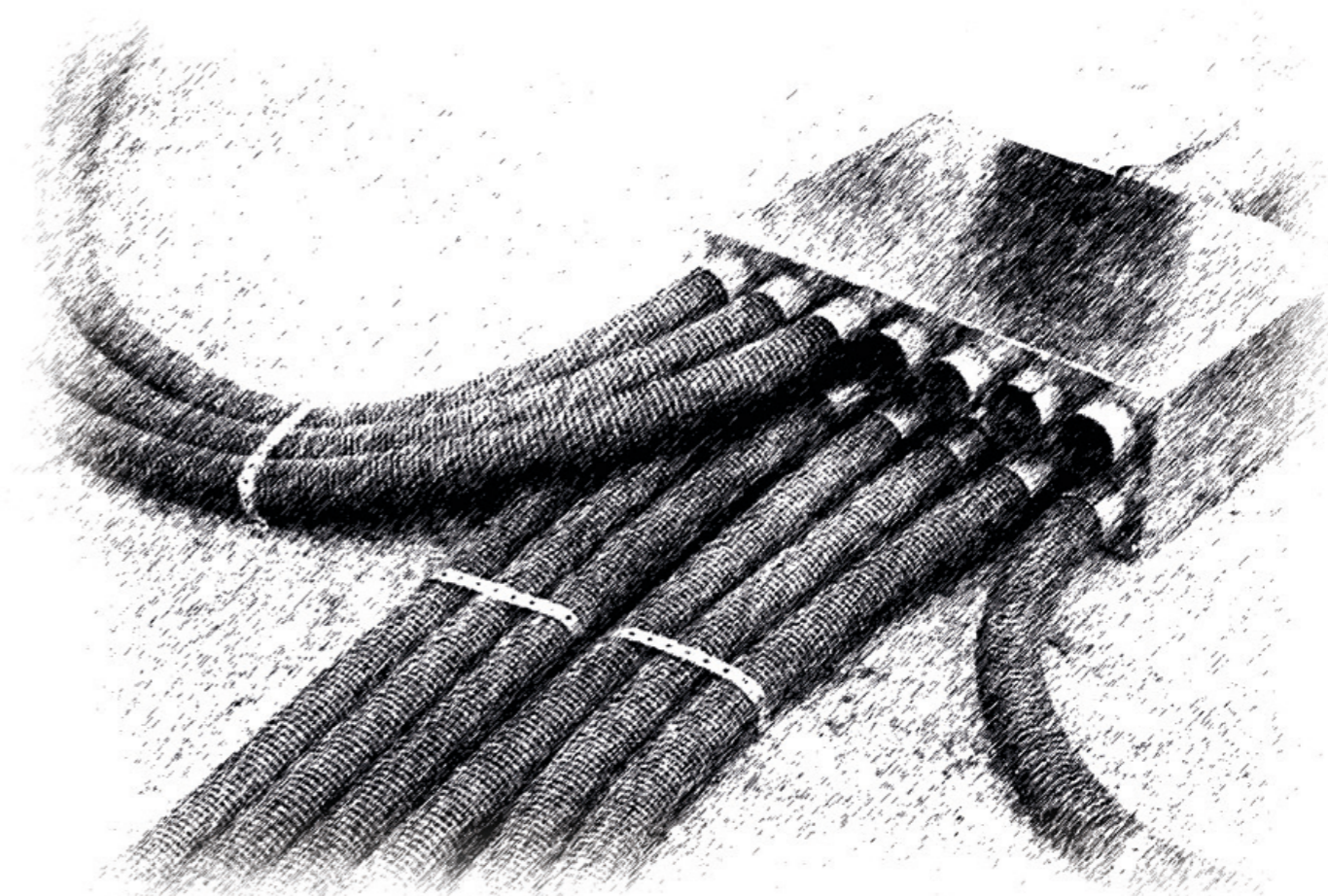
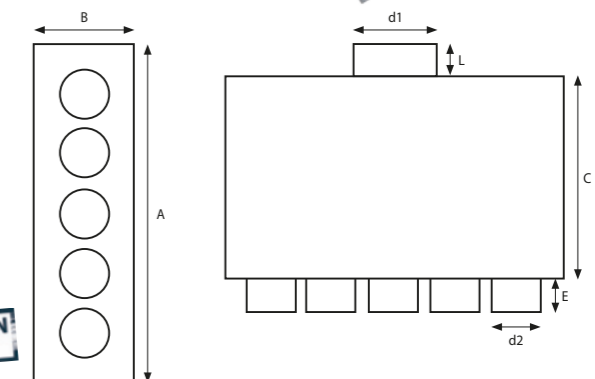
DESCRIPTION: Ceiling- and wall-mounted five port outlet plenum box to be installed both at the supply and the exhaust sides.

MATERIAL: galvanised / stainless steel

SIZE:

Index	A [mm]	B [mm]	C [mm]	d1 [mm]	d2 [mm]	E [mm]	L [mm]	€ Net Price
SK 5x75/125	500	150	300	125	75	53	50	98.6
SK 5x90/160	600	200	320	160	90	53	50	98.6

AN INSULATED VERSION IS ALSO AVAILABLE



Prices in EUR excluding VAT

*We also produce boxes according to individual customer's design

Flat distribution boxes

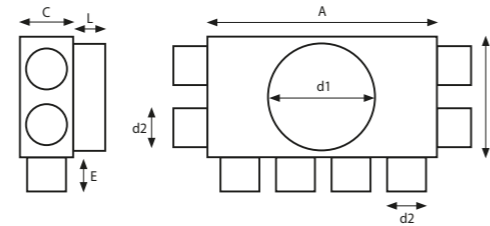
Eight Port Distribution Box

DESCRIPTION: Ceiling- and wall-mounted eight port outlet distribution box to be installed both at the supply and the exhaust sides. The distribution box facilitates the air distribution in the entire building from one place.

MATERIAL: galvanised / stainless steel*

SIZE:

Index	A [mm]	B [mm]	C [mm]	d1 [mm]	d2 [mm]	E [mm]	L [mm]	€ Net Price
SK 8x63/160	340	180	81	160	63	53	50	98.6
SK 8x75/160	400	200	91	160	75	53	50	112.0



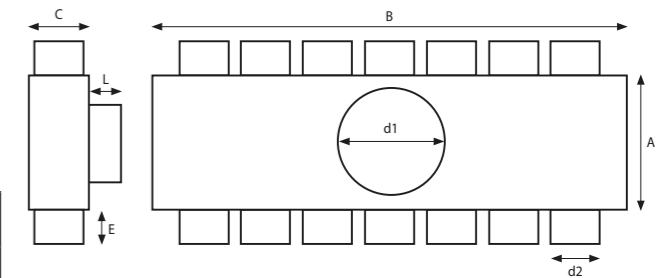
Fourteen Port Distribution Box

DESCRIPTION: Ceiling- and wall-mounted fourteen port outlet distribution box to be installed both at the supply and the exhaust sides. The distribution box facilitates the air distribution in the entire building from one place.

MATERIAL: galvanised / stainless steel*

SIZE:

Index	A [mm]	B [mm]	C [mm]	d1 [mm]	d2 [mm]	E [mm]	L [mm]	€ Net Price
SK 14x75/160	200	700	91	160	75	53	50	150.0



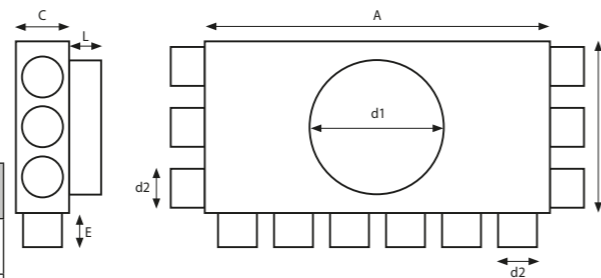
Twelve Port Distribution Box

DESCRIPTION: Ceiling- and wall-mounted twelve port outlet distribution box to be installed both at the supply and the exhaust sides. The distribution box facilitates the air distribution in the entire building from one place.

MATERIAL: galvanised / stainless steel*

SIZE:

Index	A [mm]	B [mm]	C [mm]	d1 [mm]	d2 [mm]	E [mm]	L [mm]	€ Net Price
SK 12x63/200	510	255	81	200	63	53	50	118.0
SK 12x75/200	600	300	91	200	75	53	50	134.3



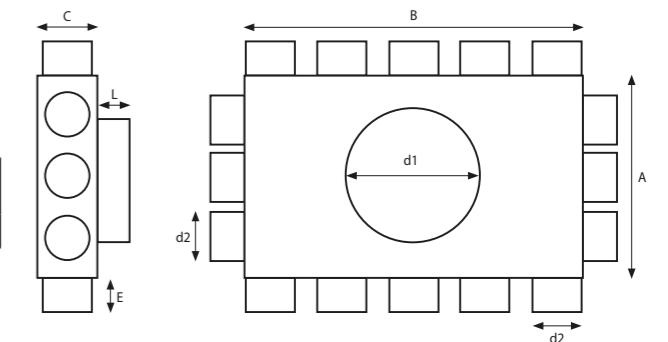
Sixteen Port Distribution Box

DESCRIPTION: Ceiling- and wall-mounted sixteen port outlet distribution box to be installed both at the supply and the exhaust sides. The distribution box facilitates the air distribution in the entire building from one place.

MATERIAL: galvanised / stainless steel*

SIZE:

Index	A [mm]	B [mm]	C [mm]	d1 [mm]	d2 [mm]	E [mm]	L [mm]	€ Net Price
SK 16x75/200	300	500	91	200	75	53	50	160.9



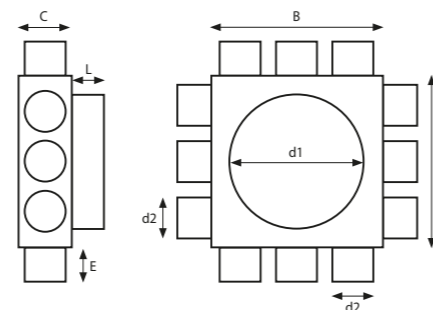
Twelve Port Distribution Box (square)

DESCRIPTION: Ceiling- and wall-mounted twelve port outlet distribution box to be installed both at the supply and the exhaust sides. The distribution box facilitates the air distribution in the entire building from one place.

MATERIAL: galvanised / stainless steel*

SIZE:

Index	A [mm]	B [mm]	C [mm]	d1 [mm]	d2 [mm]	E [mm]	L [mm]	€ Net Price
SK 12x63/200KW	255	255	81	200	63	53	50	118.0
SK 12x75/200KW	255	255	81	200	63	53	50	118.0



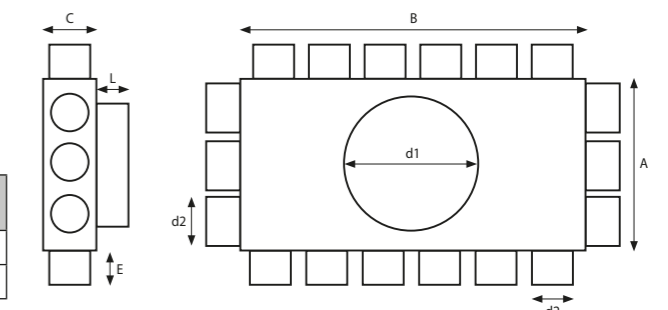
Eighteen Port Distribution Box

DESCRIPTION: Ceiling- and wall-mounted eighteen port outlet distribution box to be installed both at the supply and the exhaust sides. The distribution box facilitates the air distribution in the entire building from one place.

MATERIAL: galvanised / stainless steel*

SIZE:

Index	A [mm]	B [mm]	C [mm]	d1 [mm]	d2 [mm]	E [mm]	L [mm]	€ Net Price
SK 18x63/200	255	510	81	200	63	53	50	152.6
SK 18x75/200	300	600	91	200	75	53	50	169.1



Prices in EUR excluding VAT

Prices in EUR excluding VAT

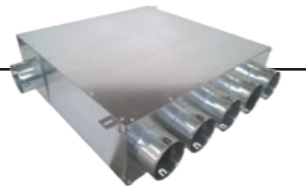
* We also produce boxes according to individual customer's design

* We also produce boxes according to individual customer's design

Single-row distribution boxes

Two-row distribution boxes

Seven Port Distribution Box with An Adjustable Panel



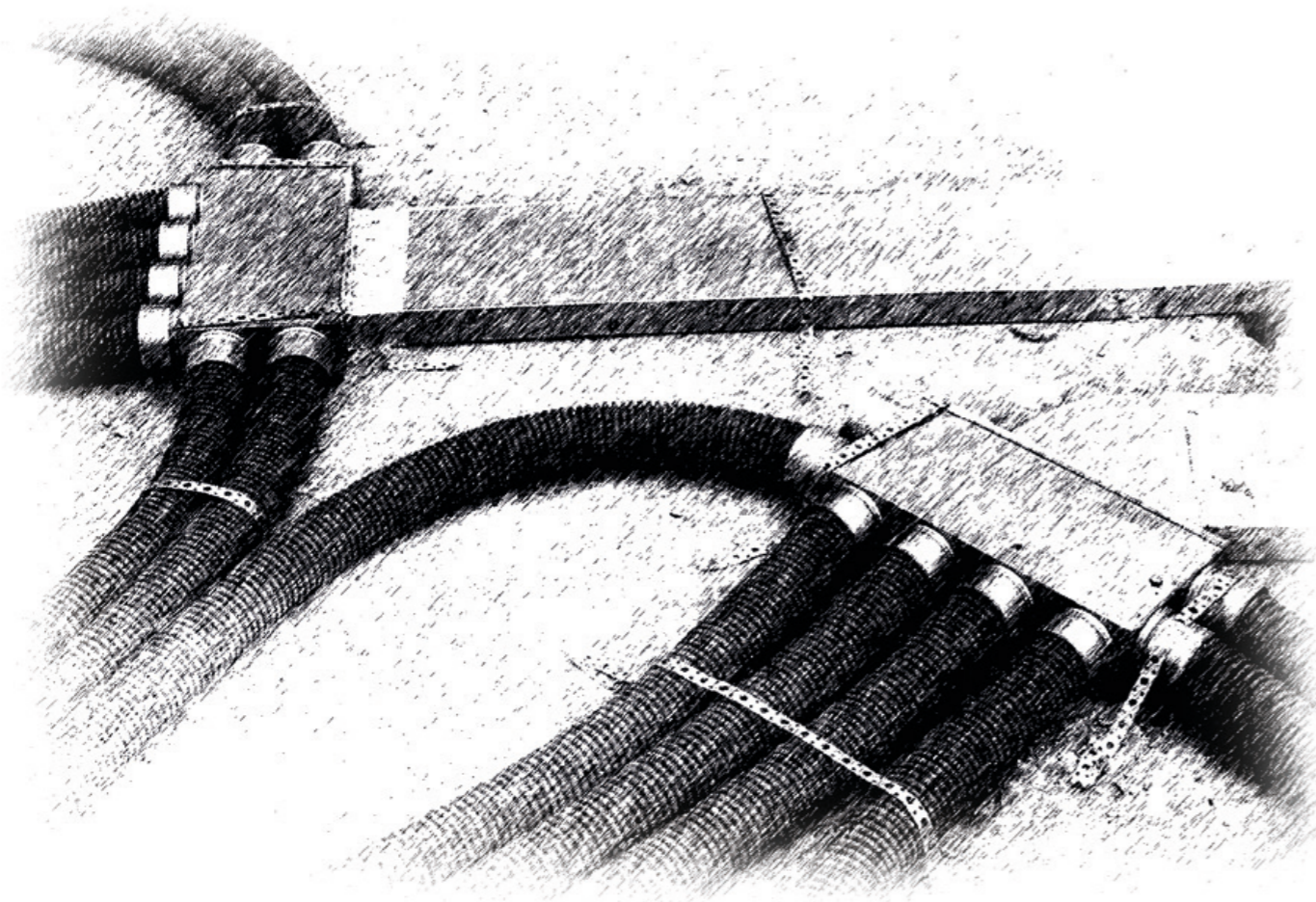
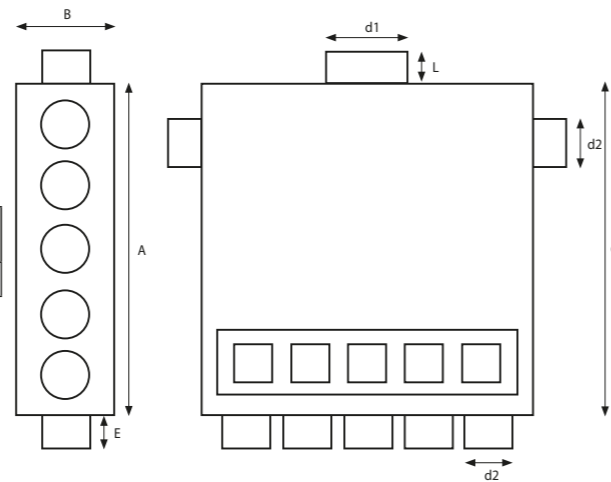
DESCRIPTION: Seven port outlet distribution box for air distribution in the entire building from one place. The plenum box is equipped with a panel. It may be set in two positions - passage and angle versions.

MATERIAL: galvanised / stainless steel*

SIZE:

Index	A [mm]	B [mm]	C [mm]	d1 [mm]	d2 [mm]	E [mm]	L [mm]	€ Net Price
SK 7x75/125P	500	150	500	125	75	53	50	150.0

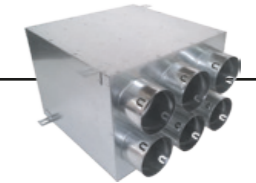
AN INSULATED VERSION IS ALSO AVAILABLE



Prices in EUR excluding VAT

* We also produce boxes according to individual customer's design

Six Port Distribution Box



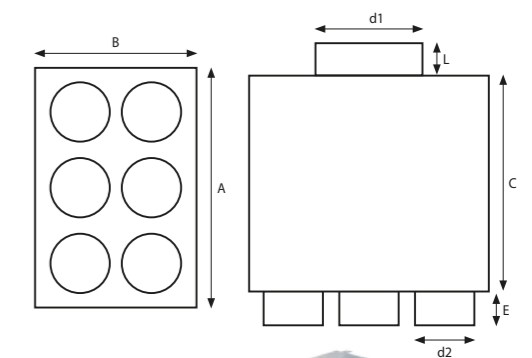
DESCRIPTION: Six port distribution box for air distribution in the entire building from one place. Special guides necessary to reduce air flow resistance are mounted inside the box.

MATERIAL: galvanised / stainless steel*

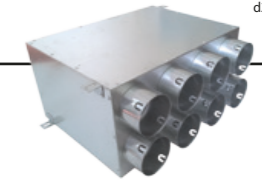
SIZE:

Index	A [mm]	B [mm]	C [mm]	d1 [mm]	d2 [mm]	E [mm]	L [mm]	€ Net Price
SK 6x90/160D	355	240	320	160	90	53	50	107.1
SK 6x75/160D	300	220	300	160	75	53	60	107.1

AN INSULATED VERSION IS ALSO AVAILABLE



Eight Port Distribution Box



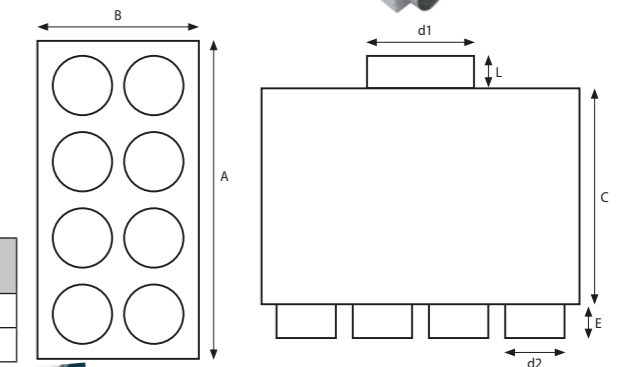
DESCRIPTION: Eight port distribution box for air distribution in the entire building from one place. Special guides necessary to reduce air flow resistance are mounted inside the box.

MATERIAL: galvanised / stainless steel*

SIZE:

Index	A [mm]	B [mm]	C [mm]	d1 [mm]	d2 [mm]	E [mm]	L [mm]	€ Net Price
SK 8x90/160D	470	240	320	160	90	53	50	118.0
SK 8x75/160D	400	200	300	160	75	53	60	118.0

AN INSULATED VERSION IS ALSO AVAILABLE



Ten Port Distribution Box



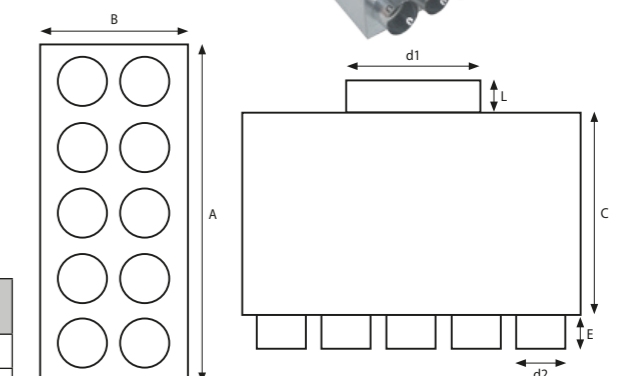
DESCRIPTION: Ten port distribution box for air distribution in the entire building from one place. Special guides necessary to reduce air flow resistance are mounted inside the box.

MATERIAL: galvanised / stainless steel*

SIZE:

Index	A [mm]	B [mm]	C [mm]	d1 [mm]	d2 [mm]	E [mm]	L [mm]	€ Net Price
SK 10x75/200D	500	220	300	200	75	53	50	140.0
SK 10x90/200D	600	246	320	160	90	53	50	140.0

AN INSULATED VERSION IS ALSO AVAILABLE



Prices in EUR excluding VAT

* We also produce boxes according to individual customer's design

Two-row distribution boxes

Connection Fittings

Twelve Port Distribution Box

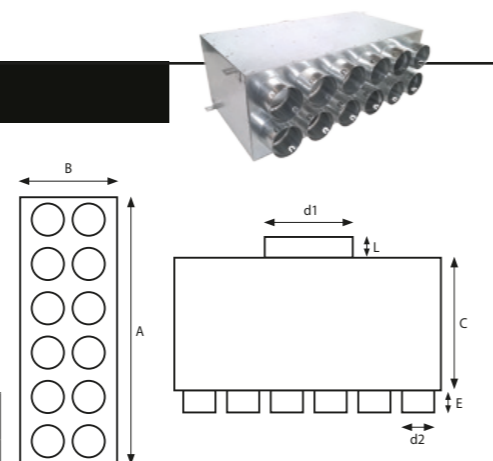
DESCRIPTION: Twelve port distribution box for air distribution in the entire building from one place. Inside the box a special guide necessary to reduce air flow resistance levels.

MATERIAL: galvanised / stainless steel*

SIZE:

Index	A [mm]	B [mm]	C [mm]	d1 [mm]	d2 [mm]	E [mm]	L [mm]	€ Net Price
SK 12x75/200D	600	220	300	200	75	53	50	142.9
SK 12x90/200D	700	240	320	200	90	53	50	142.9

AN INSULATED VERSION IS ALSO AVAILABLE



Ten Port Distribution Box with An Adjustable Panel

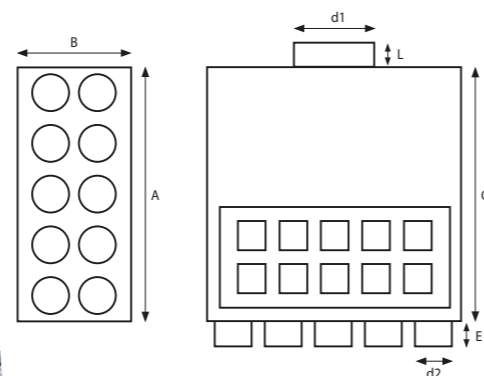
DESCRIPTION: Ten port distribution box for air distribution in the entire building from one place. The plenum box is equipped with a panel. It may be set in two positions passage and angle version. This also allows for access to the interior of the component and to carry out checks.

MATERIAL: galvanised / stainless steel*

SIZE:

Index	A [mm]	B [mm]	C [mm]	d1 [mm]	d2 [mm]	E [mm]	L [mm]	€ Net Price
SK 10x75/160P	500	255	500	160	75	53	50	174.0

AN INSULATED VERSION IS ALSO AVAILABLE



Fifteen Port Distribution Box with An Adjustable Panel

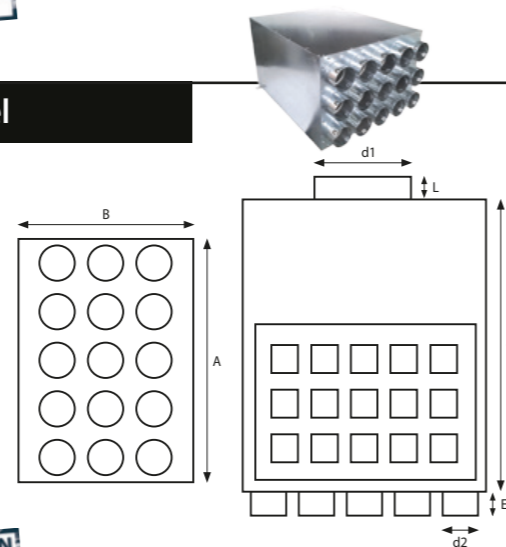
DESCRIPTION: Ten port distribution box for air distribution in the entire building from one place. The plenum box is equipped with a panel. It may be set in two positions passage and angle version. This also allows for access to the interior of the component and to carry out checks.

MATERIAL: galvanised / stainless steel*

SIZE:

Index	A [mm]	B [mm]	C [mm]	d1 [mm]	d2 [mm]	E [mm]	L [mm]	€ Net Price
SK 15x75/200P	500	360	600	200	75	53	50	238.3

AN INSULATED VERSION IS ALSO AVAILABLE



Prices in EUR excluding VAT

* We also produce boxes according to individual customer's design

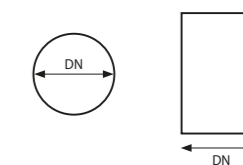
Round Channel Connector

DESCRIPTION: It is used to connect two round flexible ducts.

MATERIAL: plastic

SIZE:

Product name	Index	DN [mm]	€ Net Price
Round connector	SK03/Ø	63	1.7
Round connector	SK03/Ø	75	1.7
Round connector	SK03/Ø	90	1.7



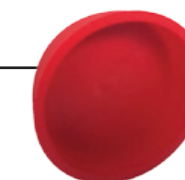
Stopper

DESCRIPTION: It is intended for closing unused ports of the distribution boxes

MATERIAL: plastic

SIZE:

Product name	Index	DN [mm]	€ Net Price
Stopper	SK05/Ø	63	1.1
Stopper	SK05/Ø	75	1.1
Stopper	SK05/Ø	90	1.1
Stopper	SK05/Ø	125	1.1



Gasket

DESCRIPTION: It is used to seal the connections between the boxes and the flexible channels.

MATERIAL: rubber

SIZE:

Product name	Index	DN [mm]	€ Net Price
Gasket	SK06/Ø	63	1.1
Gasket	SK06/Ø	75	1.1
Gasket	SK06/Ø	90	1.1



Prices in EUR excluding VAT

* We also produce components according to individual customer's design

Round Channel System

A unique system of metal ducts that allows for fast assembly; the ducts are joined using a push-in joint system which eliminates the need for couplers and reduces installation costs as a consequence. The adjustable elbows allow to adjust the radius in the range from 45° to 90° which eliminates the need to purchase similar fittings with various angles and therefore, allows to save time and money.

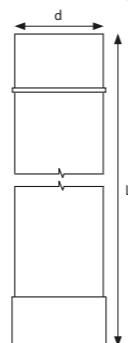
Straight Pipe

DESCRIPTION: The pipe is designed to bring fresh air from the outside to the living space and to remove the used air from living spaces to the outside of the building. Components are joined with a push-in joint system.

MATERIAL: galvanised steel

SIZE:

Product name	Index	d1 (mm)							
STRAIGHT PIPE	DPO01/Ø	100	125	150	160	180	200	250	300
€ Net Price	L=1 lm	2.9	3.7	5.1	5.7	7.1	8.0	9.4	12.3
€ Net Price	L=0.5 lm	1.7	2.3	3.4	3.4	4.3	4.9	5.7	7.4



45° and 90° Tees

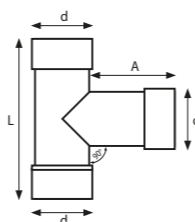
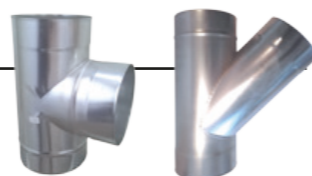
DESCRIPTION: It is used to divide the air stream at 90 and 45 degrees. Components are joined with a push-in joint system.

MATERIAL: galvanised steel

SIZE:

Designation	Index	d1 (mm)	L (mm)	A (mm)	€ Net Price 90°	€ Net Price 45°
Tee	DPO05/Ø	100	260	140	3.1	5.1
Tee	DPO05/Ø	125	280	140	4.3	7.1
Tee	DPO05/Ø	150	310	140	5.1	8.6
Tee	DPO05/Ø	160	320	140	6.0	10.0

Name	Index	d1 (mm)	L (mm)	A (mm)	€ Net Price	€ Net Price
Tee	DPO05/Ø	180	340	140	6.9	11.4
Tee	DPO05/Ø	200	360	140	7.1	12.0
Tee	DPO05/Ø	250	450	140	9.4	15.7
Tee	DPO05/Ø	300	500	140	10.3	17.1



Note! For 45° tees, please provide DPO06/Ø index

Adjustable Elbow

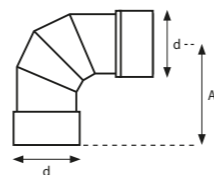
DESCRIPTION: It is intended to adjust the direction of airflow to any angle within the range from 45 to 90 degrees. Components are joined with a push-in joint system.

MATERIAL: galvanised steel

SIZE:

Product name	Index	d1 (mm)	A (mm)	€ Net Price
Adjustable Elbow	DPO07/Ø	100	150	2.9
Adjustable Elbow	DPO07/Ø	125	175	3.7
Adjustable Elbow	DPO07/Ø	150	200	4.6
Adjustable Elbow	DPO07/Ø	160	210	4.9

Designation	Index	d1 (mm)	A (mm)	€ Net Price
Adjustable Elbow	DPO07/Ø	180	230	5.7
Adjustable Elbow	DPO07/Ø	200	250	6.0
Adjustable Elbow	DPO07/Ø	250	300	8.9
Adjustable Elbow	DPO07/Ø	300	350	10.6



Prices in EUR excluding VAT

* We also produce components according to individual customer's design

Dampers and Reducers

Reducer

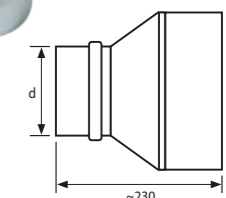
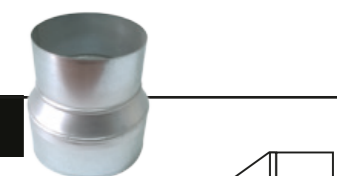
DESCRIPTION: It is used to adjust the diameter of the ventilation channel. Components are joined with a push-in joint system.

MATERIAL: galvanised steel

SIZE:

Name	Index	d1 (mm)	d2 (mm)	€ Net Price
Reducer	DPO17/Ø	100	According to the client's order	2.6
Reducer	DPO17/Ø	125	According to the client's order	3.1
Reducer	DPO17/Ø	150	According to the client's order	4.0
Reducer	DPO17/Ø	160	According to the client's order	4.3

Designation	Index	d1 (mm)	d2 (mm)	€ Net Price
Reducer	DPO17/Ø	180	According to the client's order	4.9
Reducer	DPO17/Ø	200	According to the client's order	5.4
Reducer	DPO17/Ø	250	According to the client's order	6.6
Reducer	DPO17/Ø	300	According to the client's order	7.7



Damper With a String or a Handle

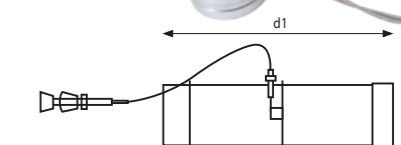
DESCRIPTION: It is used to control the airflow by means of a string or a handle. Components are joined with a push-in joint system.

MATERIAL: galvanised steel

SIZE:

Name	Index	d1 (mm)	L (mm)	€ Net Price
Damper	DPO09/Ø	100	150	12
Damper	DPO09/Ø	125	185	12.9
Damper	DPO09/Ø	150	220	13.7

Designation	Index	d1 (mm)	L (mm)	€ Net Price
Damper	DPO09/Ø	160	240	14.3
Damper	DPO09/Ø	180	270	17.1
Damper	DPO09/Ø	200	300	20.0



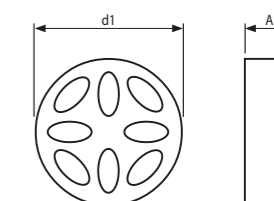
Round Damper with the Silencing Function

DESCRIPTION: Control damper with a silencer. It is intended to control the airflow and to function as a silencer. You can combine them in a series.

MATERIAL: polyurethane

SIZE:

Product name	Index	d1 (mm)	A (mm)	€ Net Price
Damper	SK 02/100	100	50	11.4
Damper	SK 02/125	125	50	17.1



Prices in EUR excluding VAT

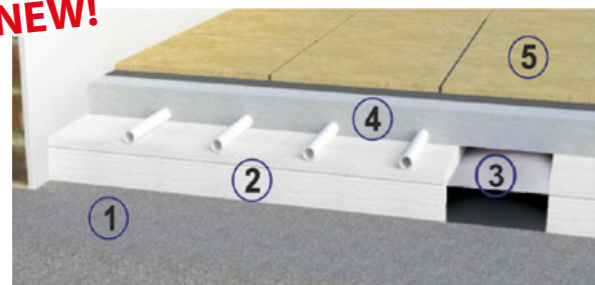
* We also produce components according to individual customer's design

VENT-FLEX Plus

VENT-FLEX Plus is a system of flat channels that requires only a 50 mm insulation layer. The installation is to be laid down directly on the concrete substrate. The system is equipped with all the components needed to perform even the most complex ventilation system. Quick to install, easy to conceal in ceilings, subfloors, walls.

VENT-FLEX Plus is also ideal for use in the forced hot air distribution system from the HAD fireplace.

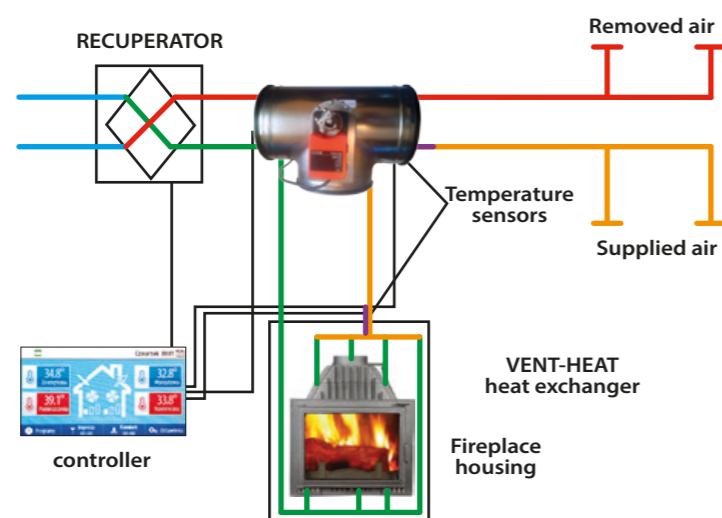
NEW!



1. Substrate (e.g. concrete)
2. Insulation of approx. 50 mm
3. Flat ventilation channel 150x50 mm
4. Screed (primary subfloor) approx. 60 mm
5. Top floor finish (tiles, panels, parquet)

Integrated Hot Air Distribution System IHADS – is a new product offered by PRODMAX. It allows for the distribution of heated air from the fireplace chamber via a special diaphragm heat exchanger to the recuperation air supply system with continuous flow control.

Thanks to IHADS you may avoid duplication of the recuperation system and conventional HADS, reduce costs and ensure climate comfort, while using the full power of the air handling unit fans. Options include air humidification, ionisation, auxiliary fan, extra filtration.



VENT-FLEX Plus

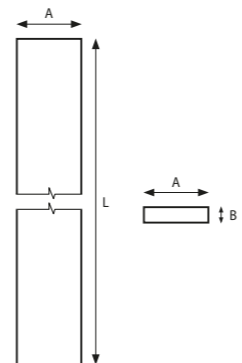
Straight duct

DESCRIPTION: The channel is designed to bring fresh air from the outside to the living space and to remove the used air from living spaces to the outside of the building.

MATERIAL: galvanised steel

SIZE:

Product name	Index	A [mm]	B [mm]	Price [1 lm]	€ Net Price [0.5 lm]
Straight duct	DPP01/size	200	50	17.00	2.8
Straight duct	DPP02/size	150	50	14.50	2.4



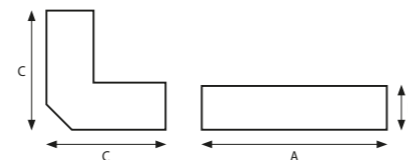
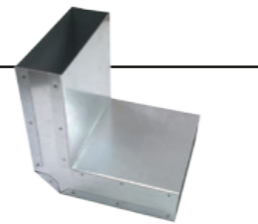
Elbow: wall - ceiling

DESCRIPTION: The elbow is used when the direction of the airflow from the vertical to horizontal and vice versa is to be adjusted.

MATERIAL: galvanised steel

SIZE:

Product name	Index	A [mm]	B [mm]	C [mm]	€ Net Price [1 lm]
Elbow: wall - ceiling	DPP03/size	200	50	130	4.0
Elbow: wall - ceiling	DPP03/size	150	50	130	3.6



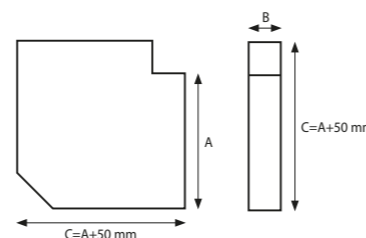
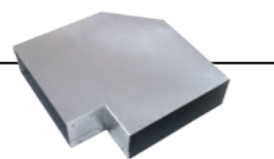
Elbow

DESCRIPTION: The elbow is used when the direction of the airflow is to be adjusted by 90 degrees.

MATERIAL: galvanised steel

SIZE:

Product name	Index	A [mm]	B [mm]	C [mm]	€ Net Price [1 lm]
Horizontal elbow	DPP05/size	200	50	250	4.0
Horizontal elbow	DPP05/size	150	50	250	3.6



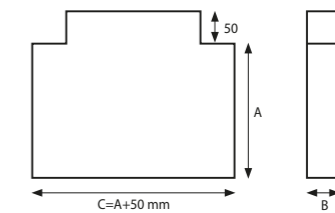
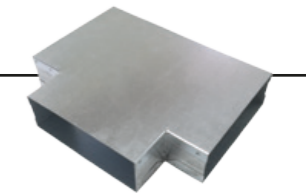
Tee

DESCRIPTION: The tee is used to divide air streams.

MATERIAL: galvanised steel

SIZE:

Product name	Index	A [mm]	B [mm]	C [mm]	€ Net Price
Tee	DPP06/size	200	50	300	4.0



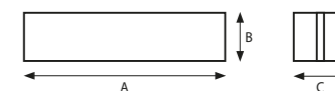
Connector

DESCRIPTION: It is a component for connecting all flat channels and components with dimensions 200x50 and 150x50.

MATERIAL: galvanised steel

SIZE:

Product name	Index	A [mm]	B [mm]	C [mm]	€ Net Price
Connector	DPP18/size	200	50	55	0.9
Connector	DPP18/size	150	50	55	0.9



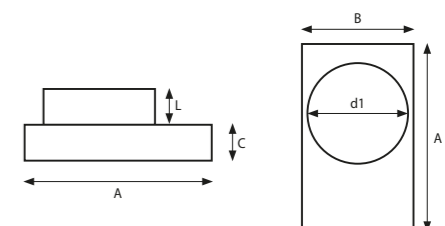
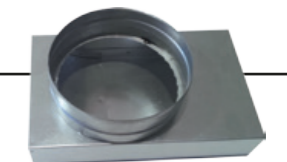
L fitting KLO-150x50/125-OC KLO-200x50/160-OC

DESCRIPTION: The fitting is used to connect the supply/exhaust duct to/from the flat channel and the diffuser.

MATERIAL: galvanised steel

SIZE:

Product name	Index	Port	A [mm]	B [mm]	C [mm]	L [mm]	€ Net Price
Fitting	DPP16/size	∅ 100x50	250	150	50	50	4.7
Fitting	DPP16/size	∅ 125x50	250	150	50	50	4.7
Fitting	DPP16/size	∅ 160x50	250	200	50	50	5.1



Prices in EUR excluding VAT

* We also produce components according to individual customer's design

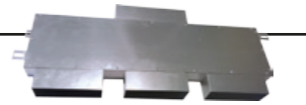
Prices in EUR excluding VAT

* We also produce components according to individual customer's design

VENT-FLEX Plus

Air Intakes and Exhaust Vents

Flat distributor

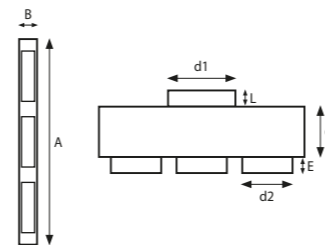


DESCRIPTION: The SK 3x150x50/200x50 Distribution Box is intended to be mounted under the subfloor within the insulation layer. It is suitable for both air supply and exhaust sides. The distribution box may also be placed in the concrete structure of the building.

MATERIAL: galvanised Steel

SIZE:

Product name	Index	A [mm]	B [mm]	C [mm]	d1 [mm]	d2 [mm]	E [mm]	L [mm]	€ Net Price
Flat distributor	SK 3x150x50/200x50	605	55	150	200	150	50	50	57.1



Flat distributor

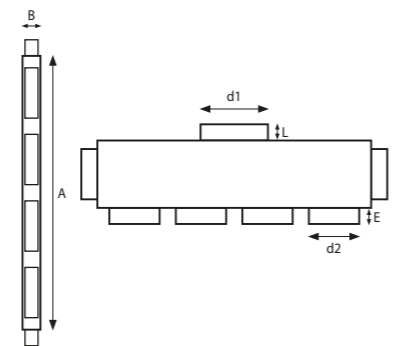


DESCRIPTION: The SK 6x150x50/200x50 Distribution Box is intended to be mounted under the subfloor within the insulation layer. It is suitable for both air supply and exhaust sides. The distribution box may also be placed in the concrete structure of the building.

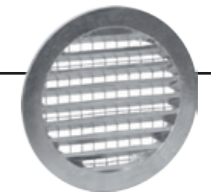
MATERIAL: galvanised Steel

SIZE:

Product name	Index	A [mm]	B [mm]	C [mm]	d1 [mm]	d2 [mm]	E [mm]	L [mm]	€ Net Price
Flat distributor	SK 6x150x50/200x50	805	55	200	200	150	50	50	71.4



Air intake port / exhaust vent

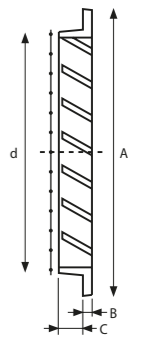


DESCRIPTION: The air intake is intended to suck fresh air from the outside of the building, while the exhaust vent is intended to eject the used air.

MATERIAL: Aluminium

SIZE:

Product name	Index	d [mm]	A [mm]	B [mm]	C [mm]	€ Net Price
Air intake port / exhaust vent	DPO60/Ø	160	185	5	15	11.4
Air intake port / exhaust vent	DPO60/Ø	200	225	5	15	14.3
Air intake port / exhaust vent	DPO60/Ø	250	275	5	15	22.9



Spherical air intake / exhaust vent

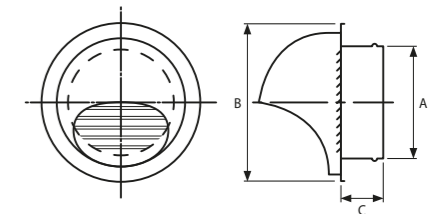


DESCRIPTION: The air intake / exhaust vent with the drip cap.

MATERIAL: chrome-nickel

SIZE:

Product name	Index	d [mm]	A [mm]	B [mm]	C [mm]	€ Net Price
Air intake port / exhaust vent	DPO61/Ø	160	155	192	62	45.7
Air intake / exhaust vent	DPO61/Ø	200	195	253	62	68.6



Ground air intake

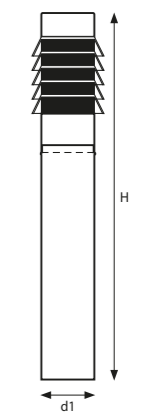


DESCRIPTION: It is advisable to use the ground air intake in case of the GHE systems.

MATERIAL: stainless steel*

SIZE:

Product name	Index	d1 [mm]	H [mm]	€ Net Price
Ground air intake	SK07/Ø	200	1500	575.0
Ground air intake	SK07/Ø	250	1500	717.7
Ground air intake	SK07/Ø	300	1500	851.4



Insulation foams

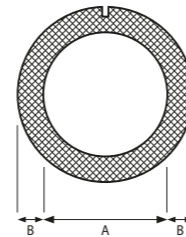
Grey insulation foam

DESCRIPTION: The insulation foam is intended to insulate the flexible ducts in areas where the air supplied to living spaces may be cooled or overheated.

MATERIAL: foamed polyethylene

SIZE:

Product name	Index	A [mm]	B [mm]	L [lm]	Packing [lm]	€ Net Price [linear m]
Grey insulation foam	TER74/size	63	13	2	50	3.4
Grey insulation foam	TER75/size	76	13	2	40	3.9
Grey insulation foam	TER82/size	89	13	2	26	4.5



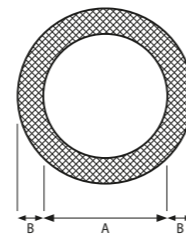
Rubber insulation foam

DESCRIPTION: The insulation foam is intended to insulate the flexible ducts in areas where the air supplied to living spaces may be cooled or overheated.

MATERIAL: rubber

SIZE:

Product name	Index	D [mm]	Insulation thickness [mm]	L [lm]	Packing [lm]	€ Net Price [linear m]
Rubber insulation foam	ACE 63/13	63	13	2	30	4.5
Rubber insulation foam	ACE 76/13	76	13	2	28	5.2
Rubber insulation foam	ACE 89/13	89	13	2	20	6.3



Adhesive rock wool

DESCRIPTION: A self-adhesive rock wool sandwich mat covered with reinforced aluminium foil. The rock wool has a pre-applied adhesive layer over the entire surface protected with a PE film, easy to remove before the installation.

MATERIAL: rock wool

SIZE:

Product name	Index	Width [mm]	Length [mm]	Packing [m ²]	€ Net Price [linear m]
Adhesive rock wool 20 mm	KLIMAFIX 20/10	1,000	1,000	10	8.1
Adhesive rock wool 30 mm	KLIMAFIX 30/8	1,000	8,000	8	9.9
Adhesive rock wool 40 mm	KLIMAFIX 40/6	1,000	6,000	6	11.9
Adhesive rock wool 50 mm	KLIMAFIX 50/5	1,000	5,000	5	13.6



Insulated Ducts

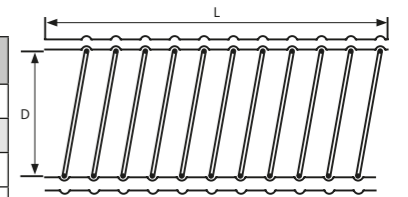
Flex Insulated Aluminium Duct

DESCRIPTION: It is a thermally insulated flexible duct, protecting against heat losses. Hot air distribution with temperature up to 150°C and up to 250°C.

MATERIAL: aluminium, rock wool as insulation coating

SIZE:

Name	Index	d1 [mm]							
		102	127	152	163	203	254	305	315
€ Net Price									
Aluminium conduit l=10 lm	DPO38/Ø	22.3	24.6	26.6	35.7	36.6	46.3	57.1	67.1
Aluminium conduit l=5 lm	DPO39/Ø	12.6	13.7	14.9	20.0	21.4	25.7	32.9	37.1



NEW!

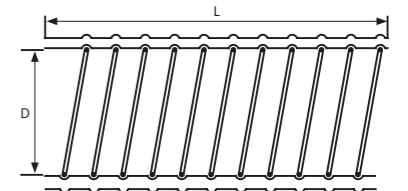
Insulated Aluminium Flexible Duct with Antibacterial Coating

DESCRIPTION: Strong yet very flexible channels for direct and quick connection of the recuperator to the system. Recommended for air supply systems in places, where high hygienic quality of the air is required, such as, kindergartens, schools and single-family houses, especially in case of household members susceptible to allergies.

MATERIAL: polyethylene with fungicide and bactericide, reinforced with non woven fabric and steel spiral; on the outside - aluminium foil laminated with polyethylene

SIZE:

Name	Index	d1 [mm]							
		102	127	152	163	203	254	305	315
€ Net Price		97.0	108.6	128.6	131.4	154.3	208.6	251.4	257.1



Prices in EUR excluding VAT

* We also produce components according to individual customer's design

Prices in EUR excluding VAT

* We also produce components according to individual customer's design

Diffusers

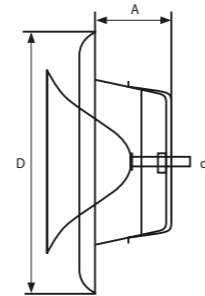
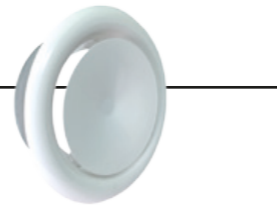
Intake Diffuser

DESCRIPTION: It allows for air supply to a room - full control.

MATERIAL: galvanised steel, powder painting

SIZE:

Name	Index	d1 (mm)							
Intake Diffuser	DPO30/Ø	100	125	150	160	180	200	250	300
€ Net Price		3.1	3.4	4.6	4.9	-	6.9	-	-



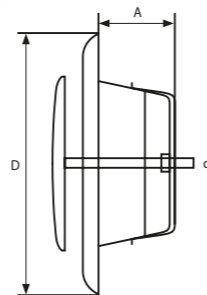
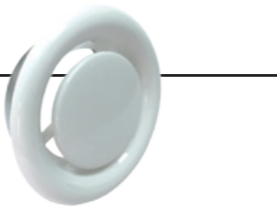
Exhaust Diffuser

DESCRIPTION: It allows for air exhaust to a room - full control.

MATERIAL: galvanised steel, powder painting

SIZE:

Name	Index	d1 (mm)							
Intake Diffuser	DPO30/Ø	100	125	150	160	180	200	250	300
€ Net Price		3.1	3.4	4.6	4.9	-	6.9	-	-



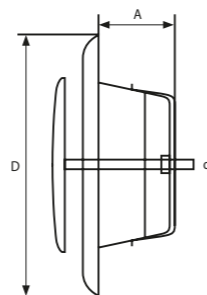
Air Supply / Exhaust Diffuser

DESCRIPTION: It allows for air exhaust to/from a room - full control.

MATERIAL: chrome-nickel

SIZE:

Name	Index	d1 (mm)							
Intake Diffuser	DPO30/Ø	100	125	150	160	180	200	250	300
€ Net Price		18.1	22.6	32.8	35.6	-	60.7	-	-



Prices in EUR excluding VAT

* We also produce components according to individual customer's design

Mounting Materials

Perforated strap

DESCRIPTION: The perforated strap is intended to suspend or mount galvanised pipes in the channel - ventilation systems

MATERIAL: perforated galvanised steel strap

SIZE:

Product name	Index	Packing (lm)	€ Net Price
Perforated strap	SK08	25	15.7



Band Clip with Specific Range of Operation

DESCRIPTION: The band clip is intended for tight coupling of flexible ducts with ports of the recuperator and distribution boxes.

MATERIAL: galvanised steel

SIZE:

Elements	Index	Packing	€ Net Price
Band clip - tape [30 m]	OZ23	1 lm	0.4
Clamp	OZ24	1 pc	0.3
Band clip - pipe clamp [1 m]	OZ25	1 pc	0.4



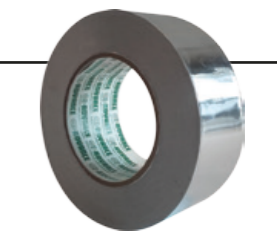
Self-Adhesive Aluminium Insulating Tape

DESCRIPTION: The non-reinforced aluminium tape, flame resistant up to the temperature of 150 degrees.

MATERIAL: aluminium on paper backing, adhesive

SIZE:

Product name	Index	Packing (lm)	€ Net Price
Aluminium Tape	SK04/50x25	25	12.9



Prices in EUR excluding VAT

* We also produce components according to individual customer's design

Air Handling Units

PRODMAX Air Handling Units are complete ventilation units for filtration and fresh air supply to the rooms, as well as for the removal of polluted air. At the same time, the exhaust air heats the fresh air supplied via a counter-current plate heat exchanger with high heat recovery efficiency. All models are designed for connection with round ventilation ducts.



ebmpapst



The important factors for selection of the air handling units for our customers include:

▪ **Heat Exchanger**

The most efficient and reliable heat exchanger is cross-, counter-flow polystyrene exchanger with high heat exchange efficiency, with efficiency of 98% of the reputable Dutch RECAIR Company, which has many years of experience, offering its products to the best air handling unit manufacturers in the market.

▪ **Fans**

The fans are equipped with the electronically commutated (EC) motors of the renowned German EBM PAPST Company with high efficiency to guarantee reliability and energy-saving quiet operation. They are equipped with the external rotor and backward bent blades. These types of motors are at present the most innovative energy saving solutions. EC motors provide high performance and control over the full range of the fan speed. Undoubtedly, high efficiency reaching 90% is the advantage of the electronically commutated motors.

▪ **By-pass**

The offered units are equipped with a bypass, providing room cooling if required, thanks to the direct supply of cool air to rooms from the outside in the summer without the need to replace the heat exchanger with summer cassettes which, from the perspective of time and operation, is quite troublesome.

▪ **Regulation**

Advanced automation allows for the fine set-up of control panel parameters for the current system and prevailing weather conditions. Continuous fan speed control, setting time schedule, anti-freeze control, by-pass control are just some of the features of the controller to optimise the unit operation.

WARNING: In our range we have many other air handling units with a wide range of performance and efficiency values; for details ask a sales representative.



PRO MINI Air Handling Unit

Specifications:	PRO MINI 300 V EC
Voltage [V/Hz]	1~230
Maximum fan power [W]	2 pcs. x 170 W
Maximum current consumption [A]	2 pcs. x 1.25 A
Air flow capacity m ³ /h	350
RPM [min ⁻¹]	4240
Noise level [db(A)/3 m]	28-47
Maximum operating temperature [°C]	From -25 to +60
Housing material	Galvanised Steel
Insulation	20 mm, Mineral Wool
Filter: exhaust ventilation	G4 / G4
Diameter of connection ports [mm]	Ø 125
Weight [kg]	32
Recuperator efficiency	up to 67%
Recuperator type	cross-flow
Recuperator material	Aluminium
€ Net Price	1200 €
€ Net Price with the Web Unit	1254 €

- **EC fans - significant energy-saving**
- **Cross heat exchanger**
- **Web Units included**
- **Advanced touch control panel**
- **Filtration cassettes with the option of cartridge replacement**
- **The possibility to connect the electric heater**
- **Anti-freeze system as standard**



Air Handling Units

V EC / VB EC Air Handling Unit

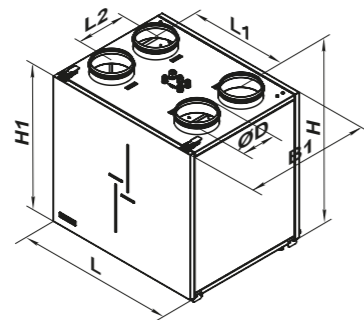


Specifications:	VUT 160 VB EC	VUT 350 VB EC	VUT550 VB EC
Voltage [V/Hz]	1~220~240 / 50-60	1~220~240 / 50-60	1~220~240 / 50-60
Maximum air handling unit power [W]	51	166	333
Maximum air handling unit current consumption [A]	0.4	1.3	2.3
Air flow capacity m ³ /h	180	415	700
RPM [min ⁻¹]	3770	3200	3230
Noise level [db(A)/3 m]	44	51	55
Maximum operating temperature [°C]	From -25 to +60	From -25 to +60	From -25 to +60
Housing material	Painted steel	Painted steel	Painted steel
Insulation	20 mm, Mineral Wool	20 mm, Mineral Wool	20 mm, Mineral Wool
Filter: exhaust ventilation	G4	G4	G4
Filter: supply	G4 (F7*)	G4 (F7*)	G4 (F7*)
Connected air duct diameter	Ø 125	Ø 160	Ø 200
Weight (kg)	34	56	65
Recuperation efficiency	From 88 % to 98%	From 85% to 98%	From 81% to 97%
Heat exchanger type	Counter-flow	Counter-flow	Counter-flow
Material of the heat exchanger	Polystyrene	Polystyrene	Polystyrene
Available compression ratio	137 m ³ /h / 150 Pa	350 m ³ /h / 150 Pa	620 m ³ /h/150Pa
€ Net Price - with the A14 controller	1569 €	1969 €	2569 €
€ Net Price - with the A11 controller	1854 €	2254 €	2829 €

Note!!! You can select between A11 or A14 control panels.

* optional

Dimensions of devices	Ø D [mm]	B1 [mm]	H [mm]	H1 [mm]	L [mm]	L1 [mm]	L2 [mm]
VUT 160 V EC	125	330	650	550	600	388	143
VUT 350 VB EC	160	544	732	629	687	426	220
VUT 550 VB EC	200	674	732	629	780	493	244



Prices in EUR excluding VAT

* Other air handling units are also available

PE EC / PW EC Air Handling Unit



Specifications:	VUT 350 PE EC	VUT 600 PE EC	VUT 600 PW EC	VUT 1000 PE EC	VUT 1000 PW EC
Voltage [V/Hz]	1~230 / 50-60	1~230 / 50-60	1~230 / 50-60	1~230 / 50-60	1~230 / 50-60
Maximum fan power [W]	200	270	270	400	400
Fan current consumption [A] (EC - fan voltage)	1.62	1.6	1.6	2.6	2.6
Heater power [kW]	1.5	2.0	-	3.3	-
Heater current consumption [A]	6.5	8.7	-	14.3	-
Total power [kW]	1.7	2.27	2.27	3.7	0.4
Total current consumption [A]	8.12	10.3	1.6	-	4
Air flow capacity [m ³ /h]	350	700	600	1100	1000
RPM [min ⁻¹]	3560	3060	3060	2780	2780
Noise level [db(A)/3 m]	48	53	53	52	52
Maximum temperature of mixed air [°C]	From -25 to +40	From -25 to +60	From -25 to +60	From -25 to +60	From -25 to +60
Housing material	Aluminium-zinc alloy	Aluminium-zinc alloy	Aluminium-zinc alloy	Aluminium-zinc alloy	Aluminium-zinc alloy
Insulation	20 mm Rock wool	20 mm Rock wool	20 mm Rock wool	50 mm Rock wool	50 mm Rock wool
Filter: exhaust	G4	G4	G4	G4	G4
Filter: supply	F7 (EU7)	F7 (EU7)	F7 (EU7)	F7 (EU7)	F7 (EU7)
Diameter of the connected air duct [mm]	Ø 160 (150)*	Ø 200	Ø 200	Ø 250	Ø 250
Weight [kg]	65	75	77	95	98
Recuperation efficiency	up to 90%	up to 90%	up to 90%	up to 90%	up to 90%
Heat exchanger type	Counter-flow	Counter-flow	Counter-flow	Counter-flow	Counter-flow
Material of the heat exchanger	Polystyrene	Polystyrene	Polystyrene	Polystyrene	Polystyrene
Available compression ratio	300 m ³ /h 150Pa	620 m ³ /h 150Pa	550 m ³ /h 150Pa	1000 m ³ /h 150Pa	900 m ³ /h 150Pa
€ Net Price - with the A11 controller	1997 €	2283 €	2569 €	3426 €	3711 €

Note!!! The only control panel option: A11.

* With the use of a reducer from Ø 160 to Ø 150

Dimensions of devices	Ø D [mm]	B [mm]	B1 [mm]	B2 [mm]	B3 [mm]	B4 [mm]	H [mm]	H1 [mm]	L [mm]	L1 [mm]	L2 [mm]	Figure (no.)
VUT 350 PE EC	149	485	415	596	132.5	220	285	130	1238	1286	948	1
VUT 600 PE EC	199	827	711	-	294	345	283	120	1238	1286	-	2
VUT 1000 PE EC	249	1350	1215	607.5	430	655	317	143	1346	1395	-	2
VUT 600 PW EC	199	827	711	-	294	345	283	120	1238	1286	-	2
VUT 1000 PW EC	249	1350	1215	607.5	430	655	317	143	1346	1395	-	2

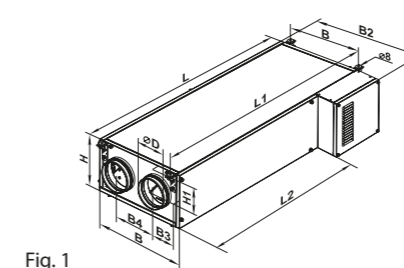


Fig. 1

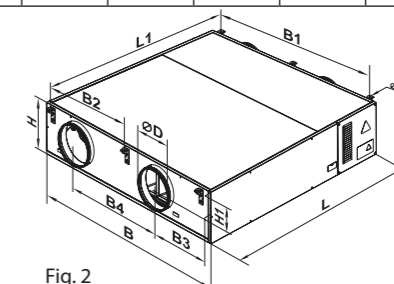


Fig. 2

Prices in EUR excluding VAT

* Other air handling units are also available

Operating consoles

Accessories

A14 Control panel



Basic air handling unit features:

- LED touch-screen
- Fan efficiency control using modes: Off, Minimum, Average and Maximum
- Manual opening and closing of the by-pass
- Notification of the need for maintenance of filters according to the counter of hours of operation
- Error signalling
- Possible connection with a laptop or PC via USB port

A11 Control panel



Basic air handling unit automation features:

- PS SENSE01 LCD touch screen
- Turn the air handling unit on and off
- Efficiency selection (Minimum – Medium – Maximum) and separate control of supply and exhaust fans within the range from 0 to 100%
- Manual and automatic by-pass control
- Operation according to the timer and its control
- Week schedule set-up
- External valve control
- Maintenance of the set temperature in the room or in the channel
- Control using a channel sensor or a sensor integrated with the control panel (optional)
- Error messages
- Filter pollution monitoring based on a counter of hours of operation
- Manual/automatic mode
- Automatic restart after restoring the power

All of PRODMAX ventilation systems can be expanded using the following components that significantly improve the quality of the supplied air by purifying or cooling or heating the air.

Air Ionisers



The Blue Storm Air Ionizer is an innovative solution that addresses the issues of air and building ventilation system pollution in buildings, that is extremely effective in combating unpleasant odours, viruses and moulds.

- Deodorisation – reduction of unpleasant odours (hotels, smoking rooms, paint shops, slaughterhouses, butchers, veterinary clinics etc.)
- Sterilisation – protection against viruses, bacteria, fungi. Applications in hospitals, infirmaries, clinics kindergartens, schools etc. The equipment reduces the possibility of mutual infection by droplets especially in younger children.
- Anti-allergic protection – effective removal of the allergens from the air and the immediate surroundings.

WARNING: The lamp is selected depending on the system size and the specific air consumption. In order to select a device, please contact the commercial office or the commercial representative.

Ground Heat Exchanger



They improve thermal quality of the supplied air; they cool the air in summer and heat the air in winter, which has a positive effect on the room climate comfort. The range includes tubular and glycol ionizers.

NOTE: The selection, that is the size of the heat exchanger etc. depends on the system size, the calculated specific air consumption. In order to select the device, please contact the commercial office or the commercial representative.

GHE Damper, IHADS

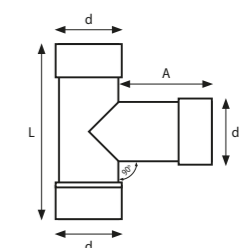


DESCRIPTION: It is intended to control and distribute the air from the wall-mounted air intake and the Ground Heat Exchanger.

MATERIAL: galvanised steel

SIZE:

Product name	Index	d1 [mm]	L [mm]	d1 [mm]	€ Net Price
GHE Damper, IHADS	DPO05/Ø	160	270	35	RFQ
GHE Damper, IHADS	DPO09/Ø	200	310	40	RFQ



Prices in EUR excluding VAT

GHE – Ground Heat Exchange

Ground Heat Exchanger, (abbreviation: **GHE**), is a system installed under the ground surface and below of the freezing zone, where the temperature fluctuates slightly during the year. This system provides pre-treated outside air to the interior of the building, using the mechanical ventilation system provided with a recuperator.

The advantages of using GHE

- The use of the GHE in the entire supply and exhaust ventilation system with heat recovery significantly reduces the power consumption of the recuperator (maintenance of temperature above 0°C in the GHE eliminates activation of the heater in winter) and improves the air quality in the building as well as lowers the building heating costs.
- In the summer, the GHE functions as fully environmentally friendly almost free air conditioner - minimum current consumption relates to the operation of fans enforcing the airflow through the system.
- In winter, it protects the mechanical ventilation system components (recuperator) against freezing and frosting!

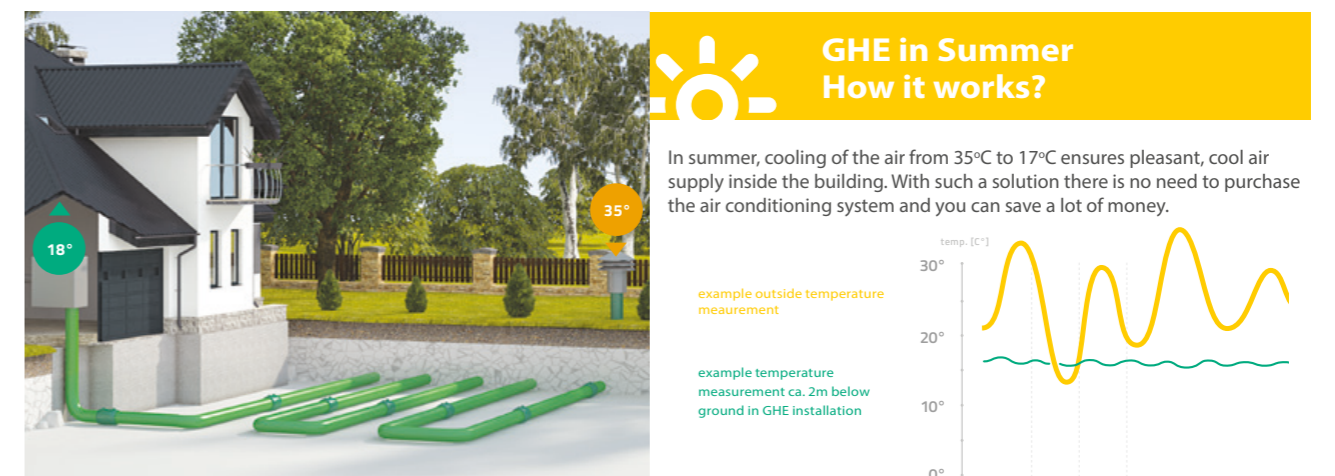
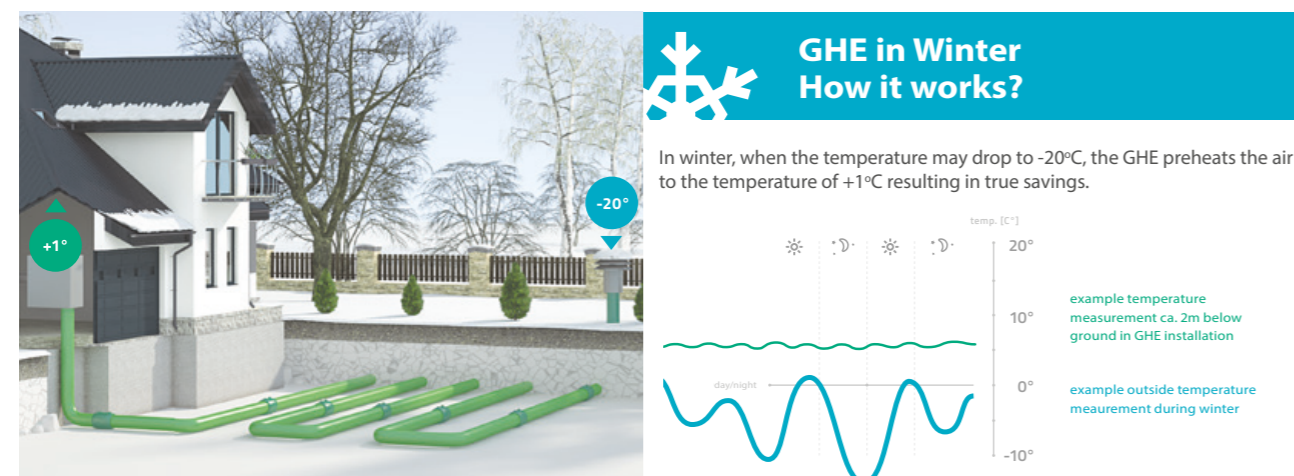
- The GHE humidifies the flowing air, which has a significant impact on the comfort of the household members

Why choose GEOHEAT?

- The GEOHEAT GHE pipes are antibacterial with an inner layer containing silver particles (a product manufactured by Swiss SANITIZED Company). It ensures fresh and healthy air free from pollution, that is beneficial for persons with an allergy or asthma.
- All the GEOHEAT GHE components are made of high quality plastic material – HDPE. The same material has been used for the construction of the gas and water supply systems since 1970s. The thermal conductivity of 0.5 W/mK – critical in the case of the GHE – is the highest among all pipe GHE solutions available on the market.

- How to connect the GEOHEAT GHE system? The GEOHEAT system components are joined using the electric resistance and butt welding. Such a way of pipe joining provides 100% system tightness and durability. The GHE system performed in such a way is completely protected against penetration of ground and storm waters. The GEOHEAT GHE system may be laid down: within the foundation outline, below the foundation plates, under parking lots or green areas, at the depth of 1.65-2.2 m. At this depth of ground the temperature is very stable. Its annual fluctuation is from 4°C to 8°C.
- The warranty period for the GEOHEAT GHE system is 30 years. It is due to the aforementioned advantages, such as: electric resistance and butt welding, high quality HDPE material (High-Density Polyethylene), the internal antibacterial layer and installation of the GEOHEAT system only by the authorized and trained technicians.
- The GEOHEAT GHE system is a Polish product that is completely manufactured in Poland.

This unique system has been patented in the Patent Office and has a trademark protected throughout the European Union.



Commercial Offer

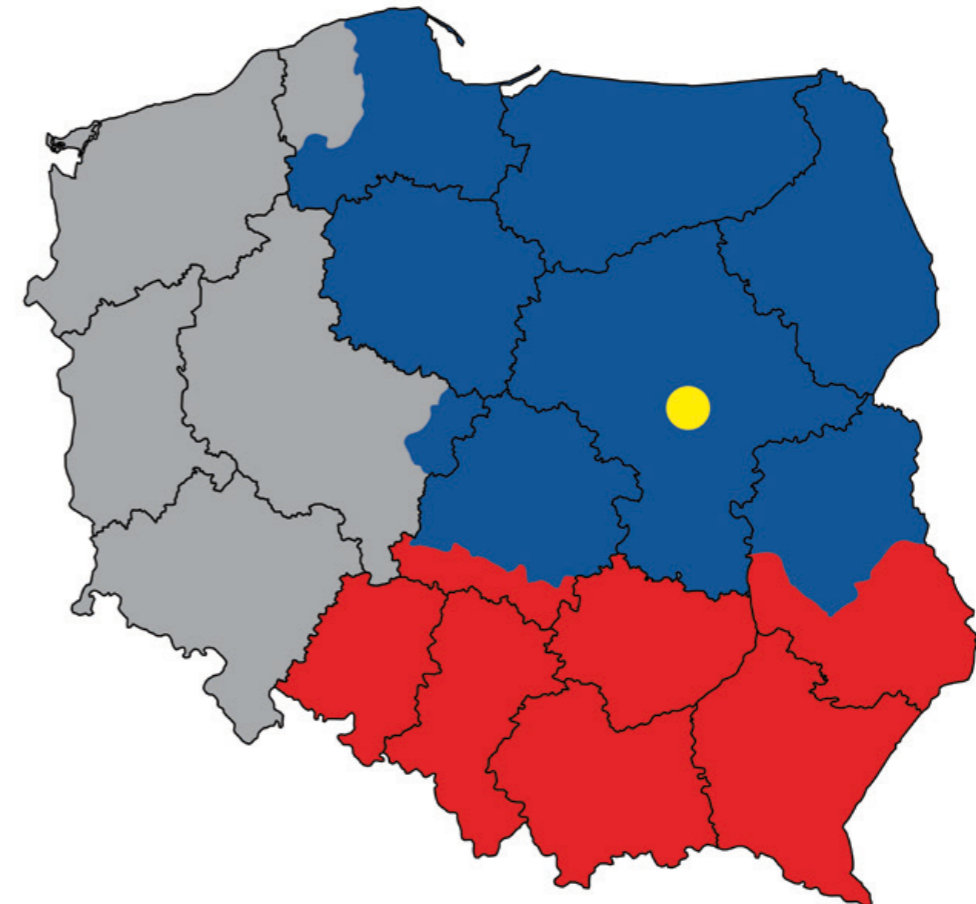
Contact

COMMERCIAL OFFER NO.

FOR:

MAP OF SALES REPRESENTATIVES

PRODUCTS ACCORDING TO THE PRICE LIST SUBJECT TO A DISCOUNT		
NAME	DISCOUNT	REMARKS
VENT-FLEX Plenum and Distribution Boxes		
Round Air Distribution Systems - Galvanized Steel Spiro		
VENT-FLEX Ducts		
Rectangular VENT-FLEX Plus air distribution systems		
FLEX insulated flexible ducts		
Diffusers Air intakes, Exhaust vents		
Thermal insulation		
Air Handling Units		



Issue date:

Payment term:

Contract completion date:

Additional arrangements:

Customer manager:



F.H.P PRODMAX
ul. Sokołowska 38, 05-806 Sokołów
Poland
phone/fax: +48 22 723 01 62

Manufacturing plant
ul. Wyzwolenia 130, 09-300 Żuromin
Poland
phone/fax: +48 23 659 39 57/ext. 18

Piotr Żydlewski
mobile phone: 664 485 593
piotr.zydlewski@prodmax.pl

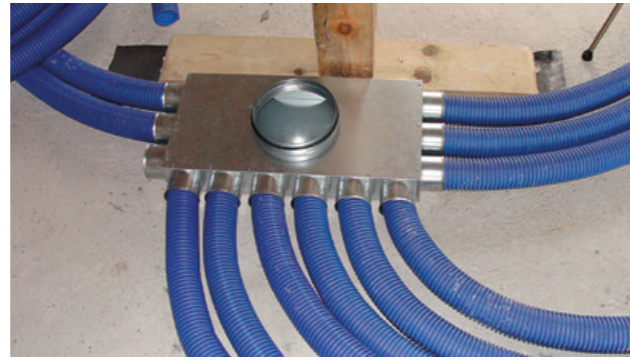
Daniel Grzywna
mobile phone: 516 452 904
d.grzywna@prodmax.pl

Jarosław Kluszczyk
mobile phone: 664 485 606
j.kluszczyk@prodmax.pl

Michał Kluszczyk
mobile phone: 516 452 931
m.kluszczyk@prodmax.pl

Krystian Dąbrowski
mobile phone: 604 487 188
krystian.dabrowski@prodmax.pl

Artur Ciołkowski - Recuperation Systems
mobile phone: 512 040 911
a.ciolkowski@prodmax.pl



www.rekuperacja-prodmax.pl



www.PRODMAX.PL

MANUFACTURING PLANT

09-300 Żuromin
ul. Wyzwolenia 130
Poland
Phone: +48 23 659 39 57
Mobile No.: +48 604 441 233
e-mail: zuromin@prodmax.pl

COMPANY'S REGISTERED OFFICE:

05-806 Sokołów
ul. Sokołowska 38
Poland
Phone/Fax: +48 22 723 01 62
Mobile No.: +48 664 485 589
e-mail: prodmax@prodmax.pl